

# RTC TAIWAN ATYCO FLUID CONTROL

## CHECKVALVES

Flanged Check Valve / Wafer Type Check Valve / Silent Check Valve  
Ball Check Valve / Lug Type Check Valve



TAIWAN ATYCO FLUID CONTROL  
EQUIPMENT INTERNATIONAL COMPANY LIMITED  
Liaoning Yuanlu Machinery Equipment Manufacturing Co., Ltd.  
Address:55 Gongnong Road, Zhanqian District, Yingkou City,  
Liaoning Province,China

TEL:+008613332319780  
FAX:+00860417-3535904  
Website:www.atyco.cn  
Email:atycoln@163.com

RTC TAIWAN  
ATYCO FLUID CONTROL

Copyright©2018.08

# Swing Check Valve With Lever And Weight

Fig:582



### ■ Features

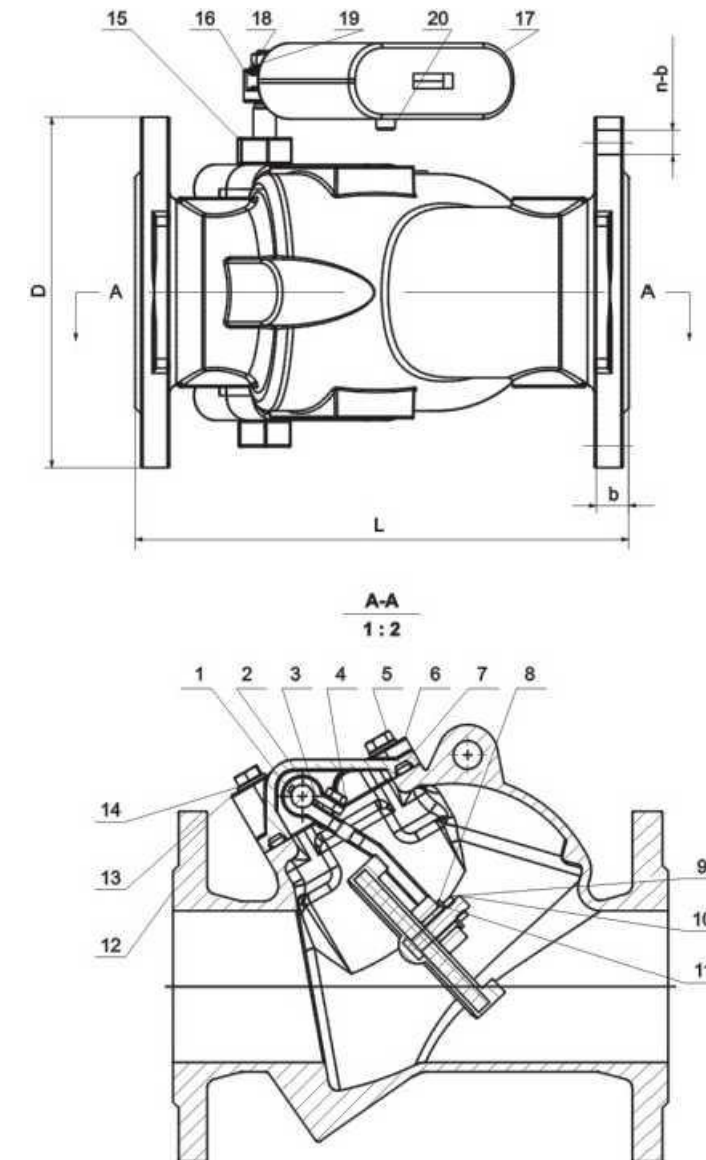
- Fully rubber encapsulated disc provides a drop tight closure and prevents the flow reversal.
- Easy and quick removal of cover for cleaning, replacement and maintenance without removing the valve from the pipeline.
- All iron parts are coated in fusion bonded epoxy resin.
- The valves are offered with lever and weight operator to aid the disc in closing quickly to minimize water hammer.

### ■ Material List

Item number	Parts name	Material
1	Hinge	Stainless Steel
2	Shaft	Stainless Steel
3	Bushing	Brass
4	Bolt	Stainless Steel
5	Bolt	Stainless Steel
6	Cover	Ductile Iron
7	Gasket	EPDM/NBR
8	Washer	Stainless Steel
9	Nut	Stainless Steel
10	Disc	Carbon Steel with EPDM/NBR
11	Sleeve	Brass
12	Body	Ductile Iron
13	Washer	Stainless Steel
14	Bolt	Stainless Steel
15	Bushing	Brass
16	Balance arm	Ductile Iron
17	Weight	Ductile Iron
18	Washer	Stainless Steel
19	Lock washer	Stainless Steel
20	Bolt	Stainless Steel
21	O Ring	EPDM/NBR
22	O Ring	EPDM/NBR

# Swing Check Valve With Lever And Weight

Fig:582

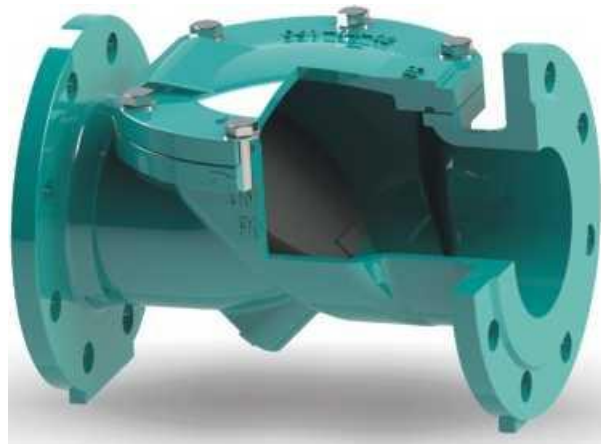


Unit: mm

DN	Flange per EN1092-2 PN16				b
	L	D	b	n	
80	260	185	19	8	19
100	330	215	20	8	19
150	410	280	23	8	23
200	540	335	22	12	23
250	640	405	24	12	28
300	700	455	30	12	28

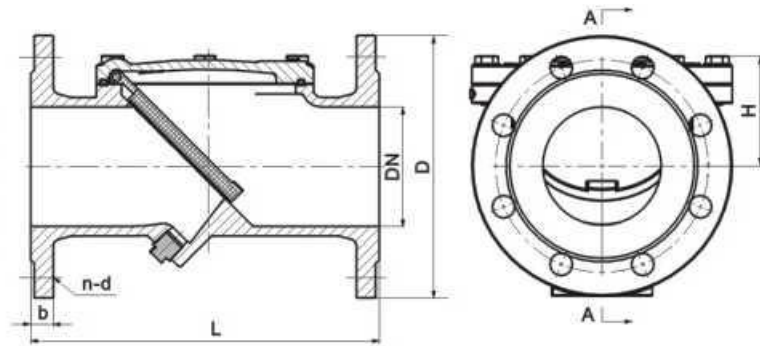
# EN Rubber Flapper Check Valve

Fig:561



## ■ Features

- Rubber encapsulated disc
- Remove the drain plug for drainage of the waste
- Suitable for both horizontal and vertical installation
- FBE coating inside and outside
- The unique design of rubber flapper disc with the hi-strength fabric reinforced which creates an elastic spring effort to close-against the flow, combined with the tilted body seat act to reduce the closing time, minimize the water hammer and flow reversal.
- The valve flow area design, with small head loss, less accumulation of debris, and easy maintenance characteristics.
- The valve is mainly applied to the drainage system can be installed at the pump outlet to prevent back flow and water hammer damage to the pump.
- The valve can also be installed in the reservoir inlet and outlet pipe on the bypass pipeline to prevent water back to the water supply system.



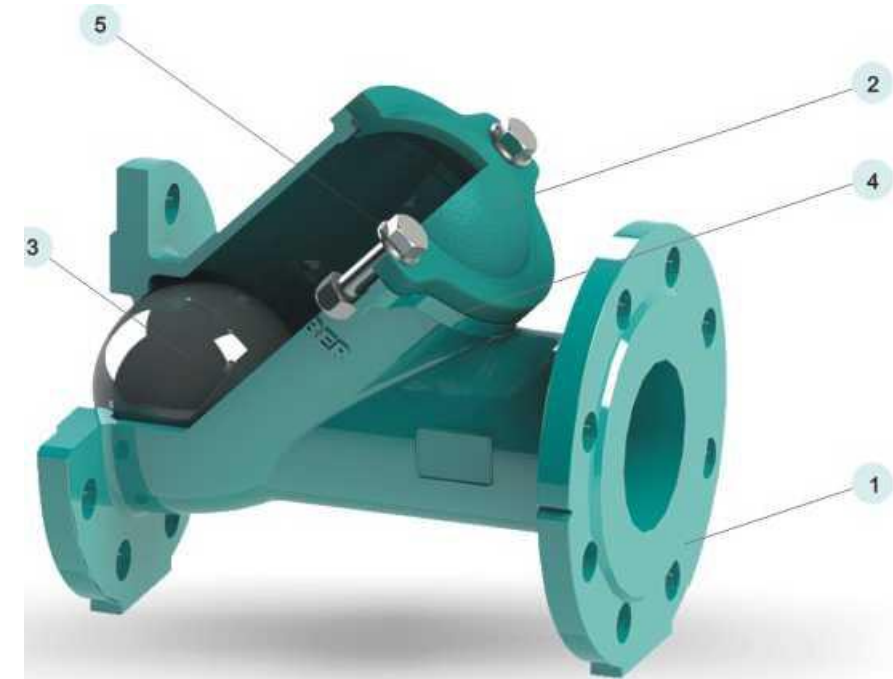
## ■ Technical Specification

- Body: Ductile Iron
- Disc: Rubber Encapsulated
- Face to Face: BS5163
- Working Pressure: PN10, PN16, Class125,10K
- Flange Drilling: EN1092 PN16

Inch	DN	L	D	n-d	b	H
2"	50	203	165	4-19	19	70
2 1/2"	65	216	185	4-19	19	74
3"	80	241	200	8-19	19	81
4"	100	292	220	8-19	19	93
5"	125	330	250	8-19	19	112
6"	150	356	285	8-23	19	126
8"	200	495	340	12-23	20	164
10"	250	622	400	12-28	22	195
12"	300	698	455	12-28	24.5	229

★Note: Specification is subject to change, please refer to the product for actual data.

# Ball Check Valve



## ■ Features

- Rumpling stations for clean, sewage water and loaded or viscous fluids

## ■ Performances

- Full bore ensured, self cleaning ball
- Low pressure drop, silent, removable bonnet for cleaning or changing the ball without disassembly out of the pipeline
- For horizontal and vertical installation position

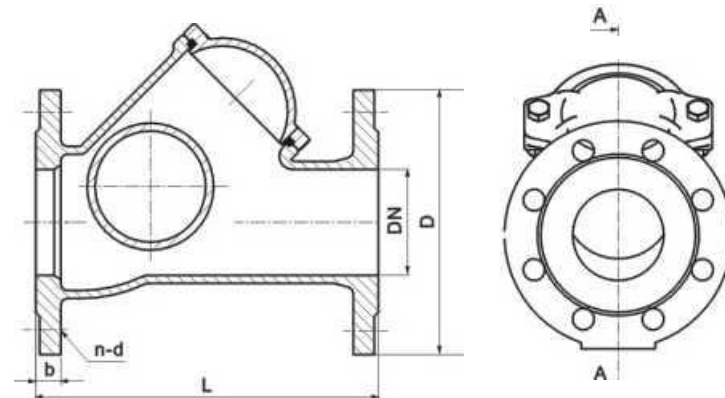
## ■ Technical data

- Operating temperature 10 degree Celsius to 80 degree Celsius
- Minimum backpressure for tightness 0.3bar to 0.5bar

No.	Part name	Material
1	Body	Ductile iron
2	Bonnet	Ductile iron
3	Ball	Steel+EPDM or NBR
4	Bonnet gasket	EPDM or NBR
5	Bolt	Stainless steel

## Flanged Ball Check Valve

Fig:565



### ■ Technical Specification

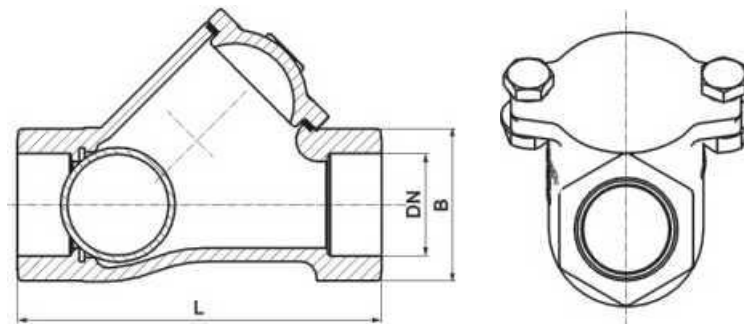
- Body: Ductile Iron
- Ball: Steel+EPDM/NBR
- Working Pressure: PN10, PN16,  
Class125,10K
- Flange Drilling: EN1092 PN16

Inch	DN	L	D	n-d	b
1 1/2"	40	180	150	4-19	19
2"	50	200	165	4-19	19
2 1/2"	65	240	185	4-19	19
3"	80	260	200	8-19	19
4"	100	300	220	8-19	19
5"	125	350	250	8-19	19
6"	150	400	285	8-23	19
8"	200	500	340	12-23	20
10"	250	600	405	12-28	22
12"	300	700	460	12-28	24.5
16"	400	900	580	16-31	28
20"	500	1150	715	20-34	31.5

★Note: Specification is subject to change, please refer to the product for actual data.

## Threaded Ball Check Valve

Fig:566



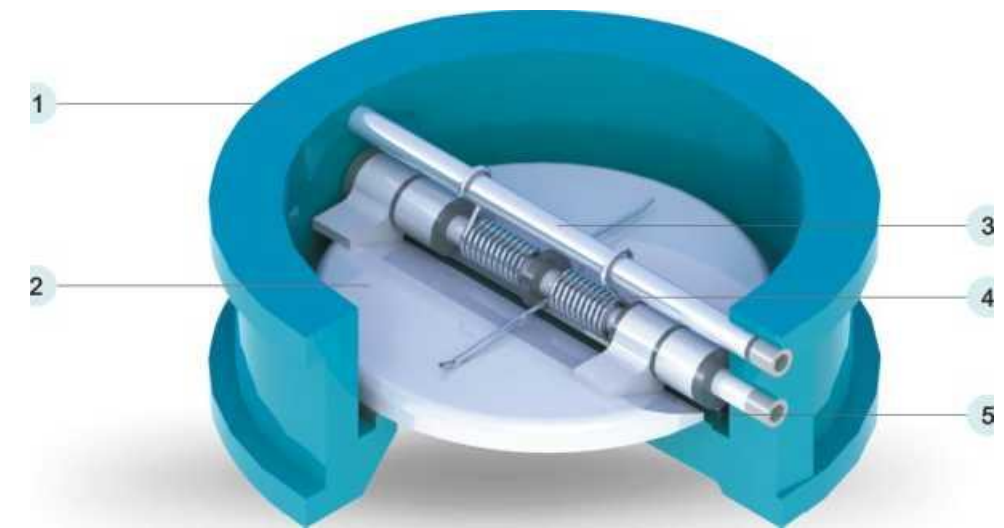
### ■ Technical Specification

- Body: Ductile Iron
- Ball: Steel+EPDM/NBR
- Thread Connect: BSP
- Working Pressure: PN10, PN16,  
Class1 25,10K

Inch	DN	L	b
1"	25	120	45
1 1/4"	32	135	50
1 1/2"	40	145	60
2"	50	175	70
2 1/2"	65	200	90
3"	80	248	108

★Note: Specification is subject to change, please refer to the product for actual data.

## Dual Plate Check Valve



### ■ Applications

- The dual plate check valve is an all purpose no return valve that is very durable, lighter in weight and smaller in comparison to a conventional swing check valve or lift check valve

### ■ Feature

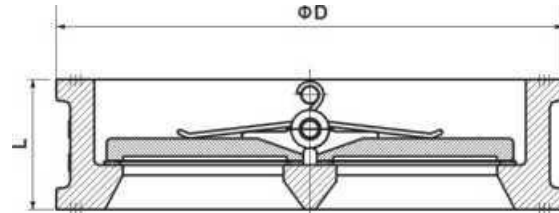
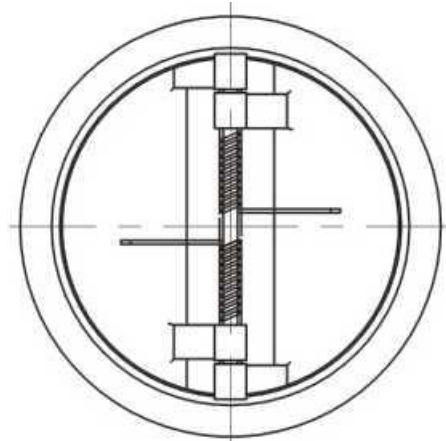
- Simple and compact construction, small in size and light in weight. Easy transportation, installation and maintenance.
- Quick 90 degree on-off operation. Minimized operating torque, energy saving.
- Excellent sealing performance with zero leakage, long service life.
- Wide selection of materials, applicable for various media.

### ■ Bill of Material

No.	Part Name	Material
1	Body	Cast Iron, Ductile iron
2	Disc	Stainless steel
3	Shaft	Stainless steel
4	Spring	SS304
5	Seat	EPDM/NBR/VITON

# Dual Plate Check Valve

Fig. 511



### ■ Technical Specification

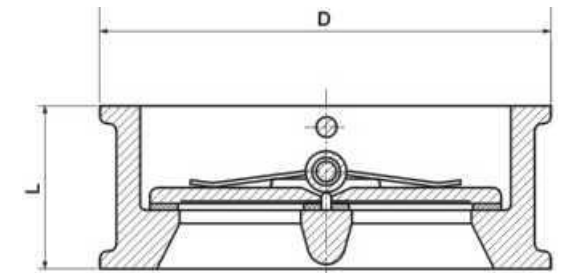
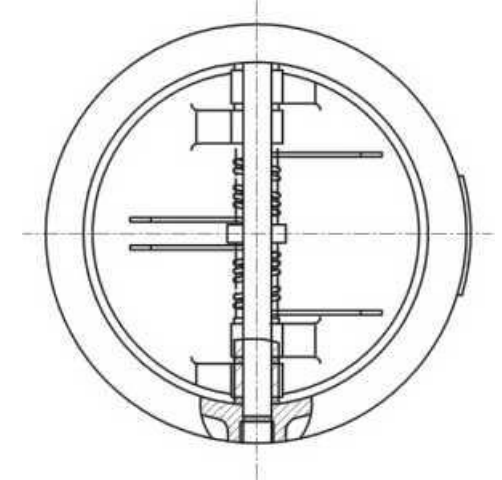
- Body: Cast Iron, WCB, SS304, SS316
- Disc: Ductile Iron, SS304, SS316
- Seat: EPDM/NBR/VITON
- Face to Face: DIN3202-K3
- Working Pressure: PN10, PN16, Class125,10K
- Flange Drilling: EN1092 PN10/16

Size	L	ØD	
		DIN2501 PN10	DIN2501 PN16
DN50	43	107	107
DN65	46	127	127
DN80	64	142	142
DN100	64	162	162
DN125	70	192	192
DN150	76	218	218
DN200	89	273	273
DN250	114	328	328
DN300	114	378	378
DN350	127	438	438
DN400	140	489	489
DN450	152	539	555
DN500	152	594	618
DN600	178	695	733

★Note: Specification is subject to change, please refer to the product for actual data.

# Wafer Dual Plate Check Valve

Fig. 512



### ■ Technical Specification

- Body: Cast Iron, WCB, SS304, SS316
- Disc: Ductile Iron, SS304, SS316
- Seat: EPDM/NBR/VITON
- Face to Face: API594
- Working Pressure: PN10, PN16, Class125,10K
- Flange Drilling: ANSI B61.1

Inch	DN	L	D
2"	50	43	105
2 1/2"	65	46	124
3"	80	64	137
4"	100	64	177
5"	125	70	197
6"	150	76	222
8"	200	89	279
10"	250	114	340
12"	300	114	410
14"	350	127	451
16"	400	140	514
48"	450	152	549
20"	500	152	606
24"	600	178	718

★Note: Specification is subject to change, please refer to the product for actual data.

# Full Lined Body Dual Plate Check Valve

Fig. 520



### ■ Technical Specification

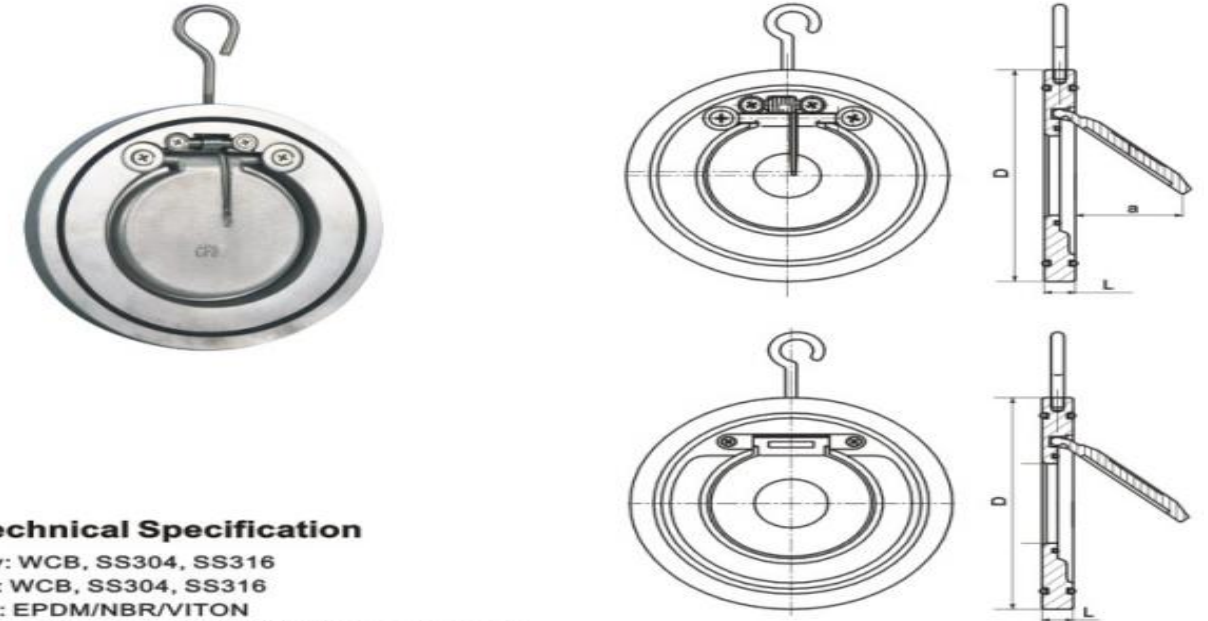
- Body: Cast Iron, Ductile Iron
- Disc: Ductile Iron, SS304, SS316
- Seat: EPDM/NBR/VITON
- Working Pressure: PN10, PN16, Class125, 10K
- Flange Drilling: AS2129 Table E

Size	H	H1	F	R	D	L	N	d
DN50	54.0	50	165	29	101	114	4	18
DN65	54.0	50	185	36	120	127	4	18
DN80	54.0	50	200	43	131	146	4	18
DN100	63.5	60	234	53	171	178	8	18
DN125	66.7	63	270	66	193	210	8	18
DN150	79.4	76	304	79	222	235	8	22
DN200	98.4	95	367	104	268	292	8	22
DN250	101.6	98	428	127	335	356	12	22
DN300	130.2	126	497	148	403	406	12	26
DN350	181	178	570	172	430	470	12	26
DN400	162	159	635	197	511	521	12	26

★Note: Specification is subject to change, please refer to the product for actual data.

# Single Plate Wafer Check Valve

Fig. 530



### ■ Technical Specification

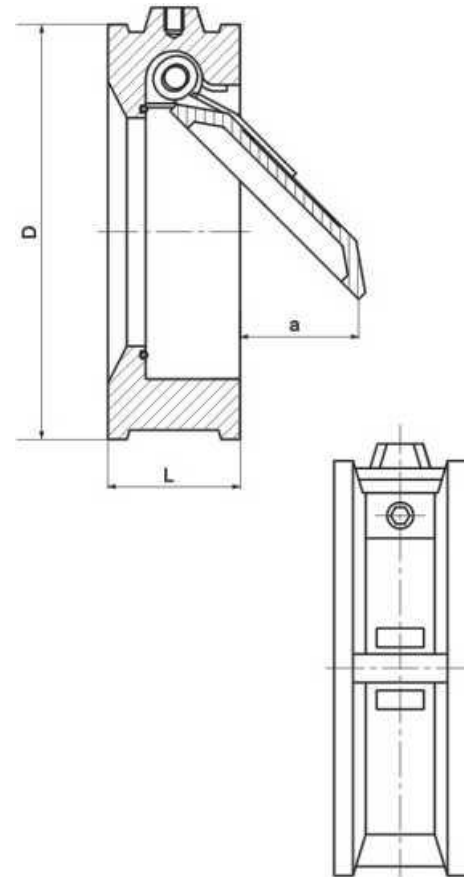
- Body: WCB, SS304, SS316
- Disc: WCB, SS304, SS316
- Seat: EPDM/NBR/VITON
- Working Pressure: PN10, PN16, Class125, 10K
- Flange Connect: EN1092 PN16

Size	L	D				a
		PN6	PN10	PN16	PN25	
DN32	14	82	82	82	82	26
DN40	14	88	95	95	95	30
DN50	16	98	109	109	109	36
DN65	17	118	129	129	129	48
DN80	17	134	144	144	144	60
DN100	18	154	164	165	170	78
DN125	18	184	195	195	198	98
DN150	20	209	220	220	228	117
DN200	22	264	275	275	288	160
DN250	26	319	330	332	343	200
DN300	32	375	380	387	403	235
DN350	38	425	440	447	460	258
DN400	44	475	490	495	517	300
DN450	44	530	540	557	567	331
DN500	56	580	595	619	327	368
DN600	62	681	698	734	737	435

★Note: Specification is subject to change, please refer to the product for actual data.

## Single Plate Wafer Check Valve

Fig. 531



### ■ Technical Specification

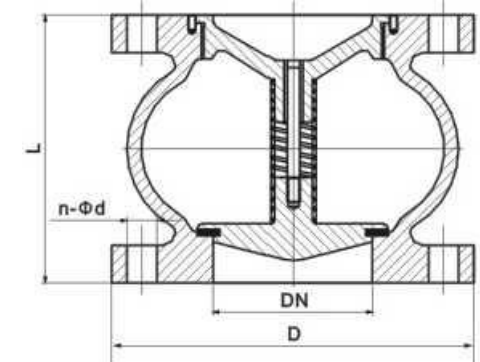
- Body: Cast Iron, Ductile Iron
- Disc: Ductile Iron, SS304, SS316
- Seat: EPDM/NBR/VITON
- Working Pressure: PN10, PN16, Class125,10K
- Flange Drilling: EN1092 PN16

Inch	DN	L	a	D		
				TableD/E	ANSI125	EN1092PN16
2"	50	44.5	29	98	102	106
2 1/2"	65	48	30	111	121	126
3"	80	51	56	130	134	141
4"	100	57	75	162	172	161
5"	125	63.5	95	194	194	191
6"	150	70	114	216	220	217
8"	200	73	156	273	277	272
10"	250	79	187	337	337	337
12"	300	86	222	384	407	382
14"	350	108	229	444	447	446
16"	400	108	248	495	511	515
18"	450	108	300	558	546	550
20"	500	140	324	615	602	610
24"	600	152	387	726/723	715	733

★Note: Specification is subject to change, please refer to the product for actual data.

## Silent Check Valve Flanged

Fig. 541



### ■ Technical Specification

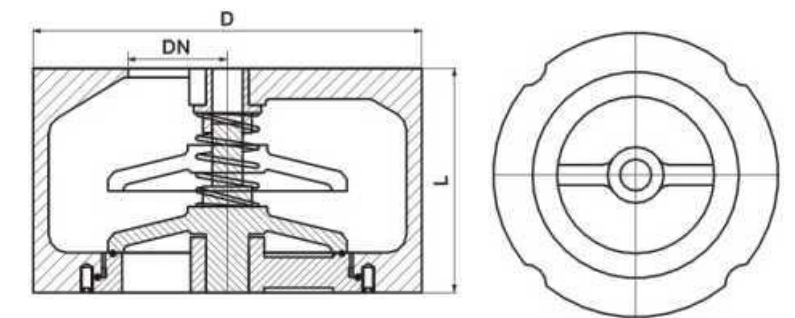
- Body: Cast Iron, Ductile Iron
- Plug: Cast Iron, Ductile Iron, SS304, SS316
- Seat: EPDM/NBR/VITON
- Working Pressure: PN10, PN16, Class125,10K
- Flange Drilling: EN1092 PN16

Inch	DN	L	D	n-Φd
2"	50	100	152	4-19
2 1/2"	65	120	178	4-19
3"	80	140	191	4-19
4"	100	170	229	8-19
5"	125	200	254	8-22
6"	150	230	279	8-22
8"	200	288	343	8-22
10"	250	354	406	12-25
12"	300	410	483	12-25

★Note: Specification is subject to change, please refer to the product for actual data.

## Silent Check Valve Wafer Type

Fig. 543



### ■ Technical Specification

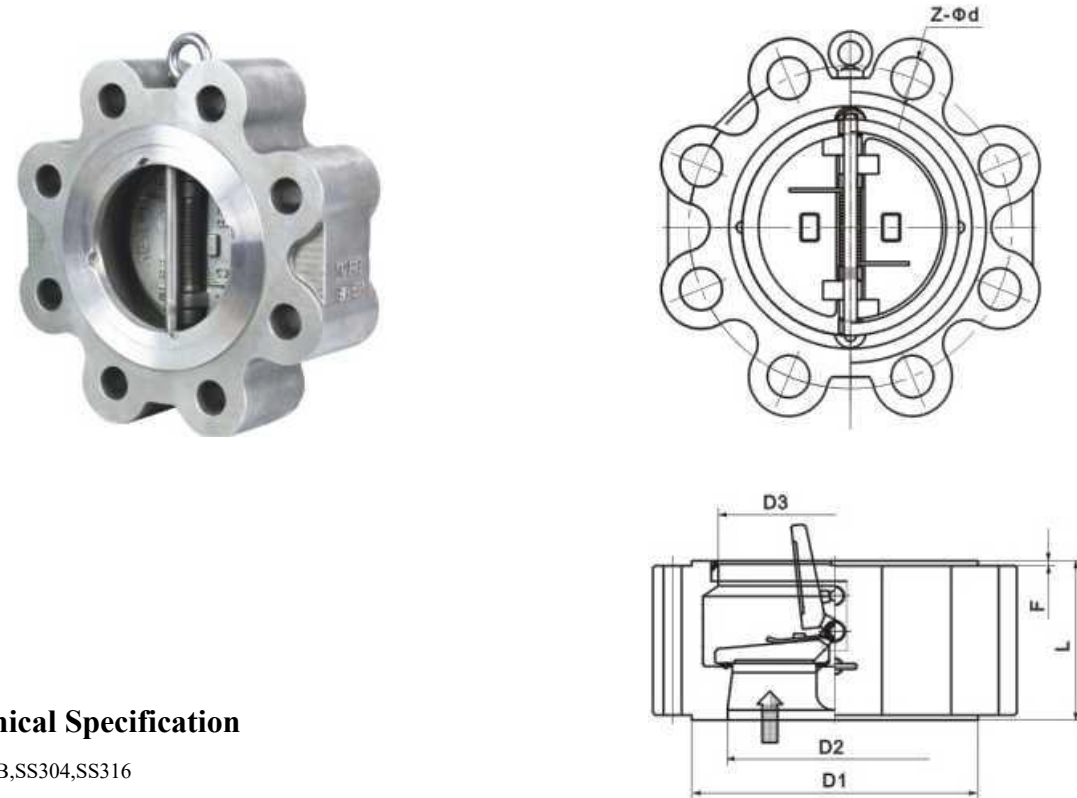
- Body: Cast Iron, Ductile Iron
- Disc: SS304, SS316
- Bushing: SS304
- Working Pressure: PN10, PN16, Class125,10K
- Flange Drilling: EN1092 PN16

Inch	DN	L	D	CV
2"	50	69.8	108	40
2 1/2"	65	73	127	60
3"	80	82.5	146	85
4"	100	101.6	177.8	150
5"	125	117.6	212.8	230
6"	150	139.7	247.6	340
8"	200	139.7	301.7	600
10"	250	209.5	406	900
12"	300	285.7	482.6	1100

\*Note: Specification is subject to change, please refer to the product for actual data.

# Lug Dual Plate Check Valve Mental Seat

Fig.550L



## ■ Technical Specification

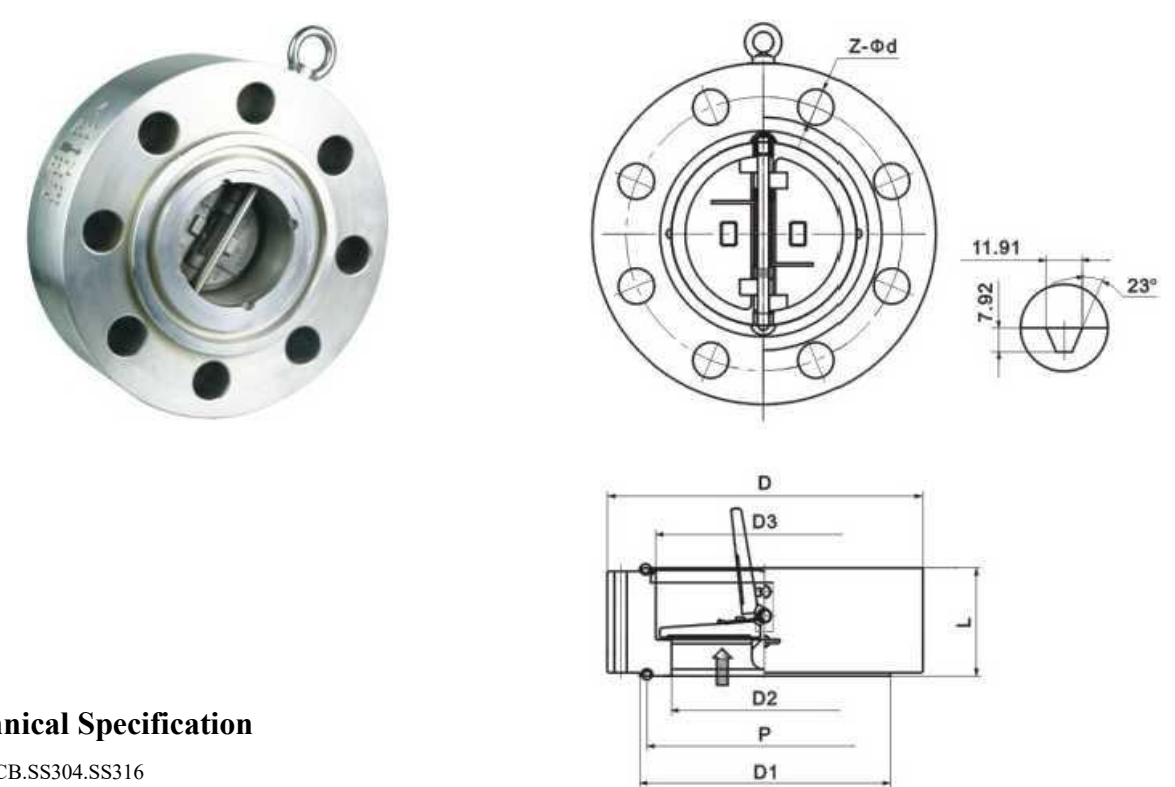
- Body: WCB,SS304,SS316
- Disc: WCB,SS304,SS316
- Seat: SS304, SS316
- Working Pressure: PN25, Classi 50,10K
- Flange Drilling: ANSI1150#

Inch	L	D1	D2	D3	D4	P	Z-d
2"	60	120.5	92	51	56	82.5	4-19
2 1/2"	67	139.5	105	65	73	101.6	4-19
3"	73	152.5	127	80	88	114.3	4-19
4"	73	190.5	157	102	108	149.2	8-19
5"	86	216	186	127	132	171.4	8-22
6"	98	241.5	216	152	160	193.6	8-22
8"	127	298.5	270	203	210	247.6	8-22
10"	146	362	324	254	266	304.6	12-25
12"	181	432	381	305	310	381	12-25
14"	184	476	413	350	355	396.8	12-29
16"	191	540	470	400	405	454	16-29
18"	203	578	533	450	455	517.5	16-32
20"	219	635	584	500	505	558.8	20-32
24"	222	749.5	692	600	605	673.1	20-35

★Note: Specification is subject to change, please refer to the product for actual data.

# Wafer Dual Plate Check Valve Mental Seat

Fig. 550W



## ■ Technical Specification

- Body: WCB,SS304,SS316
- Disc: WCB, SS304, SS316
- Seat: SS304, SS316
- Working Pressure: PN25, Classi50-1500,10K
- Flange Drilling: ANSI1150#

Inch	L	D	D1	D2	D3	D4	P	Z-d
2"	60	152	120.5	92	51	56	82.5	4-19
2 1/2"	67	178	139.5	105	65	73	101.6	4-19
3"	73	190	152.5	127	80	88	114.3	4-19
4"	73	229	190.5	157	102	108	149.2	8-19
5"	86	254	216	186	127	132	171.4	8-22
6"	98	279	241.5	216	152	160	193.6	8-22
8"	127	343	298.5	270	203	210	247.6	8-22
10"	146	406	362	324	254	266	304.6	12-25
12"	181	483	432	381	305	310	381	12-25
14"	184	533	476	413	350	355	396.8	12-29
16"	191	597	540	470	400	405	454	16-29
18"	203	635	578	533	450	455	517.5	16-32
20"	219	699	635	584	500	505	558.8	20-32
24"	222	813	749.5	692	600	605	673.1	20-35

★Note: Specification is subject to change, please refer to the product for actual data.



Note

:

**RTC**

Lead the smart flow...

Note

:

**RTC**

Lead the smart flow...